

## Important Dates 2024

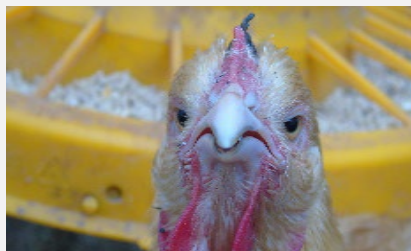
- 4/1 **Enrollment Deadline**
- Attend **ONE Quality Assurance training** (all animals exhibiting at the fair must attend one of these sessions)
  - 3/12 6:30-7:30pm at Fairgrounds
  - 3/16 9:00-10:00am at Fairgrounds
  - 4/13 9:00-10:00am at Fairgrounds
  - 4/21 5:00-6:00pm at Fairgrounds
- Enroll in Fair Show Classes via Blue Ribbon from May 1<sup>st</sup> – June 1<sup>st</sup>.
- Livestock **Judging** and **Skill-a-thon** (July 13<sup>th</sup> 8am- noon)
- **Fair Move in** on 7/14/24 from 2:00-5:00pm
- **Show at the Ottawa County Fair-** July 16<sup>th</sup> at 9:00am
- **Livestock Sale** on 7/19/24
- **Barn Meeting -**

**Remember to  
thank your  
buyer(s) after the  
sale!**

## Poultry Committee Contacts

### Questions about your Poultry Project?

Contact a member of the Ottawa County 4-H Poultry Department



### Poultry Department Superintendents:

- ❖ Anna Brandt.....(419) 367-0920
- ❖ Christie Wolf .....(419) 345-3597

#### OSU Extension Ottawa County

240 W. Lake Street  
Unit C  
Oak Harbor, OH 43449  
Phone: 419-898-3631

Email: [avers.15@osu.edu](mailto:avers.15@osu.edu)

Visit us Online at: [Ottawa.osu.edu](http://Ottawa.osu.edu)

Facebook: [Ottawa County 4-H](https://www.facebook.com/OttawaCounty4H)

Updated 2/6/2023



**THE OHIO STATE UNIVERSITY**  
COLLEGE OF FOOD, AGRICULTURAL,  
AND ENVIRONMENTAL SCIENCES



CFAES provides research and related educational programs to clientele on a nondiscriminatory basis. For more information, visit [cfaesdiversity.osu.edu](http://cfaesdiversity.osu.edu). For an accessible format of this publication, visit [cfaes.osu.edu/accessibility](http://cfaes.osu.edu/accessibility).

**CFAES**

OHIO STATE UNIVERSITY EXTENSION

Ottawa County 4-H

## Species Guide for First Year Projects



## Poultry



**THE OHIO STATE UNIVERSITY**  
COLLEGE OF FOOD, AGRICULTURAL,  
AND ENVIRONMENTAL SCIENCES

## Considering a Poultry Project?

Consider the following project requirements and guidelines for Ottawa County 4-H Poultry Projects.

### Members must:

- ☐ Enroll in 4-H by the April 1st Deadline
- ☐ Secure Poultry Projects by required hatch date(s).
- ☐ Own and raise enough poultry to exhibit at the county fair.
- ☐ Attend Quality Assurance training (if applicable)
- ☐ Complete Project Book and attend Livestock Judging and Skill-a-thon (July)
- ☐ Bring poultry to the Fair at scheduled time
- ☐ Bring proof of negative Pullorum test

## Recommended Items



**THE OHIO STATE UNIVERSITY**

COLLEGE OF FOOD, AGRICULTURAL,  
AND ENVIRONMENTAL SCIENCES

## Resources for Poultry Projects

**Ottawa County 4-H Handbook on OSU Website** – <https://ottawa.osu.edu/program-areas/4-h-youth-development/4-h-handbook-0>

**Ottawa County Fair Handbook on OSU Website**  
<https://ottawa.osu.edu/program-areas/4-h-youth-development/ottawa-county-fair>

## Equipment & Cost Considerations

- Costs of poultry can vary
- A coop for the poultry
- Heat Lamp
- Cost of feeds can vary
- A clean continuous water supply is needed
- Shavings

The Ottawa County Fair Book lists all exhibition rules and requirements.

## Exhibiting a Poultry Project

### Items needed for the fair:

- Cage to transport animal in
- Frozen water bottles
- Food
- Grooming materials

**Dress code:** White, long-sleeved shirt or lab coat. Pants with no holes. No open toed shoes.

### Fair Exhibition Requirements:

#### Market Poultry

- Egg Production, Pullets (taken first year)
- Egg Production, Hens (bring eggs along)
- Broilers
- Turkey
- Breeder Market Turkey
- Duck
- Helmeted Guinea Fowl

#### Fancy Poultry

- Exhibition Fancy, Large Fowl
- Duck
- Pigeon
- Goose
- See Fair Handbook for class descriptions